

MANAGING EXTREMES **Willis Re**

Willis Research Network

UN-SPIDER Expert Meeting

Rashmin Gunasekera and Keiko Saito

16th Nov. Geneva

The WRN Team 45 plus 6

Willis Re MANAGING EXTREMES

The logos include: ambiental, Beijing Normal University, Bogaziçi University, British Geological Survey, University of Cambridge, Birkbeck University of London, University of Bristol, Cambridge Architectural Research Limited, City University London, Colorado University of Colorado at Boulder, Durham University, EUCENTRE, ETH, Georgia Tech, Imperial College London, Institute for Business & Home Safety, KIT, GFDL, GNS, Georgia State University, EXETER, ELUVIUS FLEVES, THE FLORIDA STATE UNIVERSITY, GFDL, GNS, Georgia State University, Georgia Tech, Imperial College London, Institute for Business & Home Safety, KIT, GFDL, GNS, Georgia State University, Met Office, NUS, National Centre for Earth Observation, Universidad de los Andes, NANYANG TECHNOLOGICAL UNIVERSITY, Princeton University, Proudman Oceanographic Laboratory, NESL, NCAR, Ordnance Survey, Newcastle University, UNIVERSITY OF OXFORD, Wharton University of Pennsylvania, University of Reading, SCRIPPS INSTITUTION OF OCEANOGRAPHY, Swansea University, TOHOKU, UWI, Walker Institute.

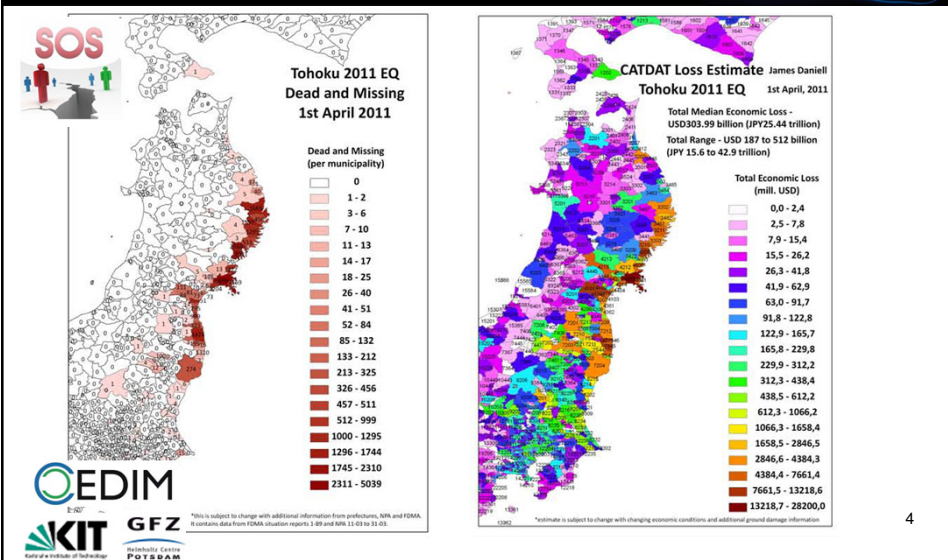
2

Christchurch Feb 22nd Mw=6.3, Learning With the WRN

Task Force NZ
Eq with Keith
Porter,
Andrew King,
and Remote
sensing Unit at
Cambridge:
Low cost
Synthetic
Vulnerabilities
and a more
accurate NZ
EQ Model

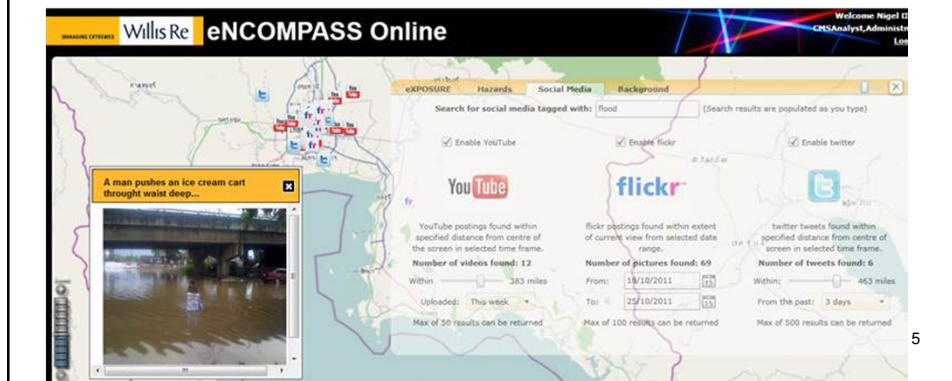


Service: James Daniell et al. (2011): 27,500 Fatalities, 300,000 homeless, USD 304bn Economic Loss, h after event!



Use of crowdsourcing within the Re/Insurance Industry

1. Live feeds from the crowdsource communities on eNCOMPASS which could provide a ground base view of the disaster and information to clients
2. Time varying disaster tracking (related to temporal variation)
3. Assist in handling claims.



Tohoku earthquake insurance claim handling using geospatial data

- Pre-event footprint and post-event aerial photographs used for claim handling by the Marine and Fire Insurance Association of Japan as well as local governments.



Highlights the importance of data preparedness

tomnod Disaster Mapper | Christchurch GEOCAN | Led by ImageCat, TomNod, EERI, EEFIT, CAR Ltd, Christchurch City Council funded by Global Earthquake Model

DISASTER MAPPER | INSTRUCTIONS | GEOCAN | CROWDSOURCING | CONTACT | Tweet | Like

login Tutorial 1 / 3

tomnod Disaster Mapper

Help map the damage.

On February 22, 2011, a 6.3 magnitude earthquake devastated Christchurch, New Zealand.

START TUTORIAL

Willis Re MANAGING EXTREMES

Need more info?

- Dr. Rashmin Gunasekera gunasekerar@willis.com
- Dr. Keiko Saito keiko.saito@carltd.com

8